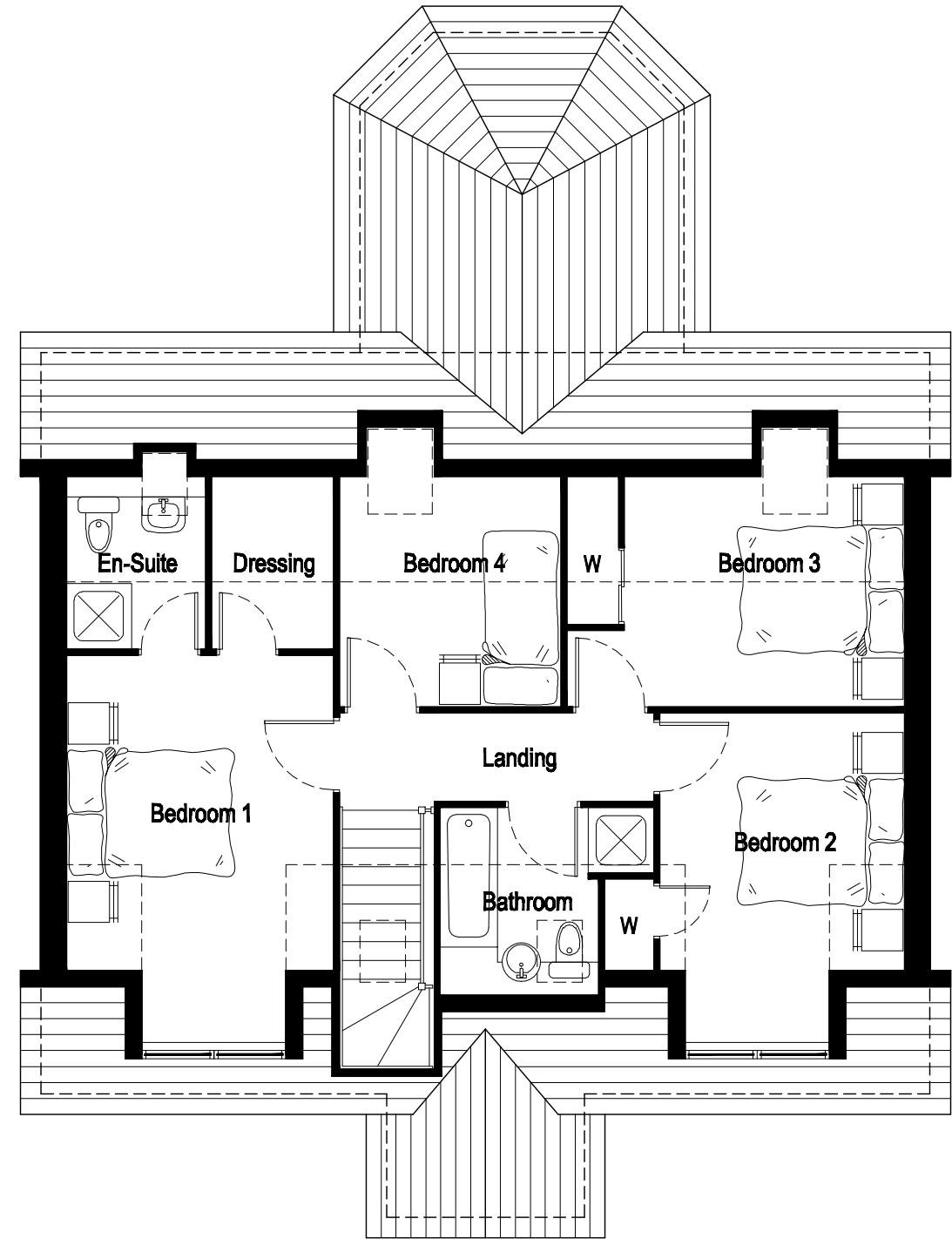


Ground Floor Plan

Laurel Room Sizes:-

Lounge	4980x4200mm	(16'4" x 13'9")
Dining	3270x3270mm	(10'9" x 10'9")
Kitchen/Breakfast	4830x3270mm	(15'10" x 10'9")
Sunroom	3770x3308mm	(12'4" x 10'10")
Utility	2570x1870mm	(8'5" x 6'2")
Toilet	1870x1595mm	(6'2" x 5'3")
Bedroom 5	3285x3224mm	(10'9" x 10'7")



First Floor Plan

Bedroom 1	3800x3224mm	(12'6" x 10'7")
Dressing	2070x1454mm	(6'9" x 4'9")
En-Suite	2070x1670mm	(6'9" x 5'6")
Bedroom 2	3100x2954mm	(10'2" x 9'8")
Bedroom 3	3384x2770mm	(11'1" x 9'1")
Bedroom 4	2770x2662mm	(9'1" x 8'9")
Bathroom	2250x1900mm	(7'5" x 6'3")